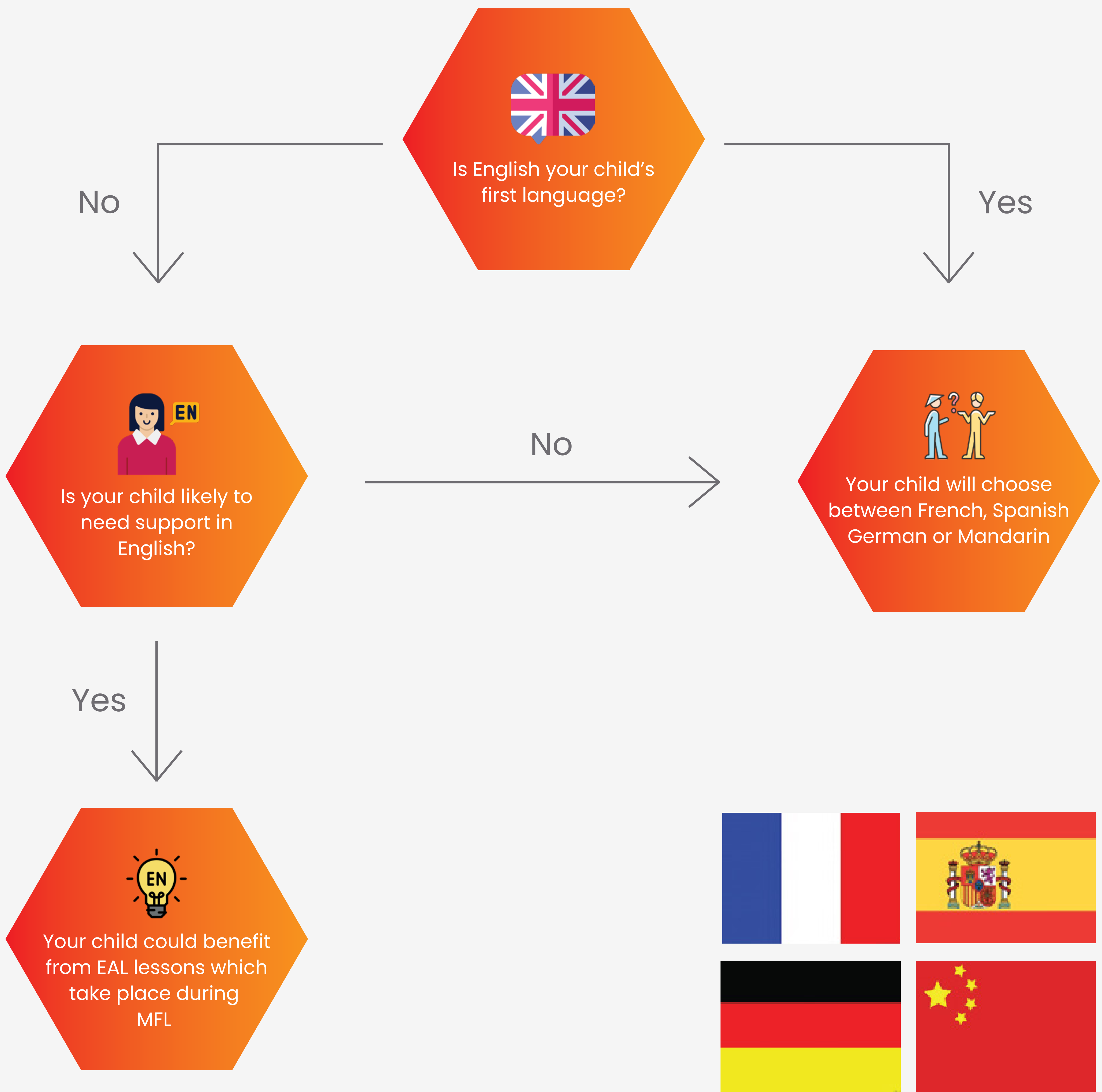


MODERN FOREIGN LANGUAGES IN THE PRIMARY SCHOOL

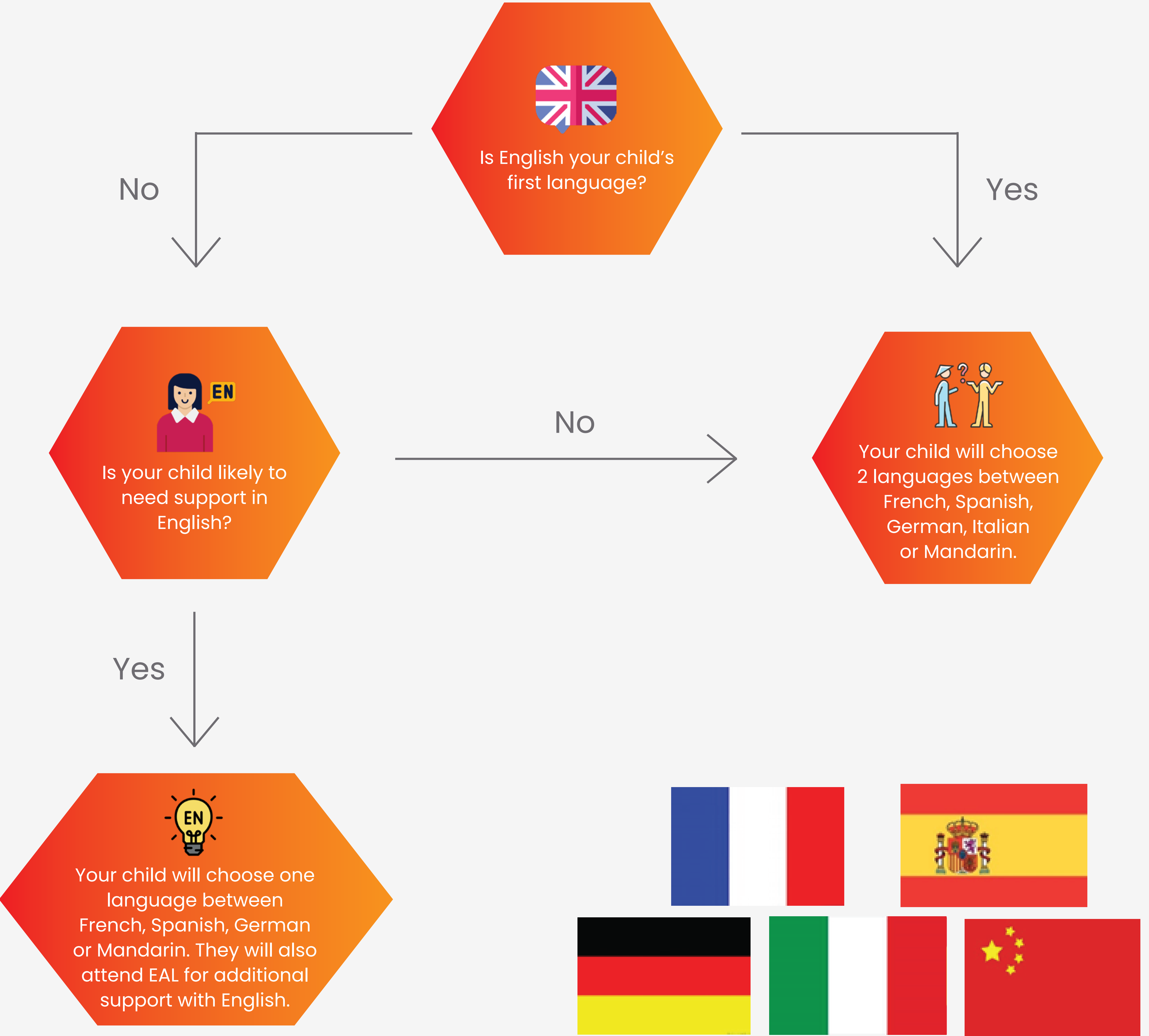
At Hartland, we aim to encourage tomorrow’s leaders to embrace all languages. Arabic is delivered as part of the curriculum from Foundation Stage. Following this, MFL is introduced to the curriculum in Year 2. Please refer to the flow chart below to further understand how the MFL department can cater for your child’s language learning needs.



- Please note:
- The MFL department works closely with the English and EAL departments. Once we feel that a pupil’s English needs have been met, they are reintegrated into the MFL lessons.
 - These lessons are for second language learners rather than native speakers.

MODERN FOREIGN LANGUAGES IN THE SECONDARY SCHOOL

At Hartland, we aim to encourage tomorrow’s leaders to embrace all languages. In the secondary, our students generally learn two languages in addition to Arabic. Please refer to the flow chart below to further understand how the MFL department can cater for your child’s language learning needs.



Please note:

- The MFL department works closely with the English and EAL department. Once we feel that a pupil’s English needs have been met, they may be encouraged to take up another Modern Foreign Language.
- As their second language option, we currently offer native speakers, tiered lessons which are geared towards early entry for iGCSE.

